

Papercut Mobility Print Windows

Connect to the following Link. It will Autodetect the Operating system you are connection from.

Please note Linux is not supported at this stage.

Note: Please make sure you are on the Wits WiFi and not Guest or Eduroam

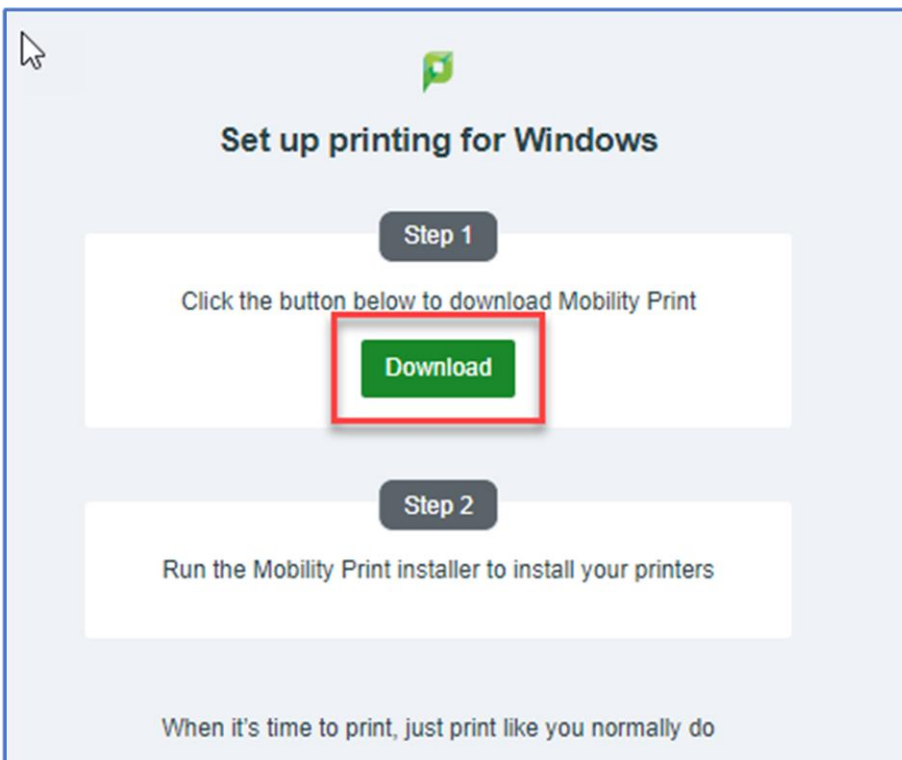


Open the link

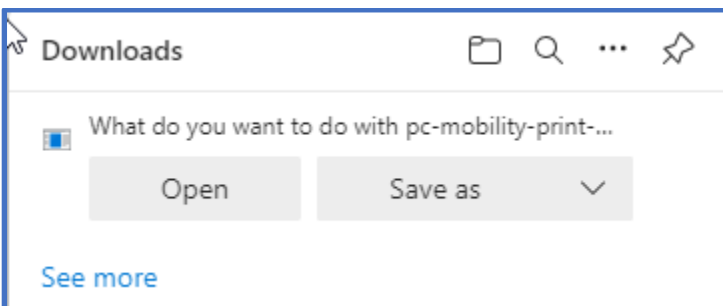
<http://146.141.254.26:9163/setup>

or select the QR Code.

It will automatically select your operating system. Select Download under Step 1

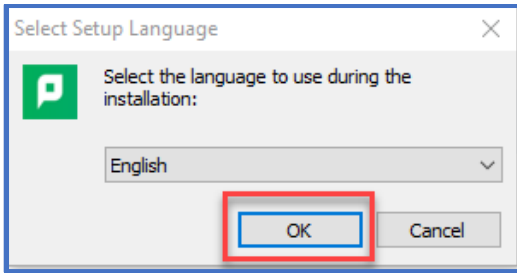


It will Download the Papercut Mobility application. If you get a popup like below select Open.

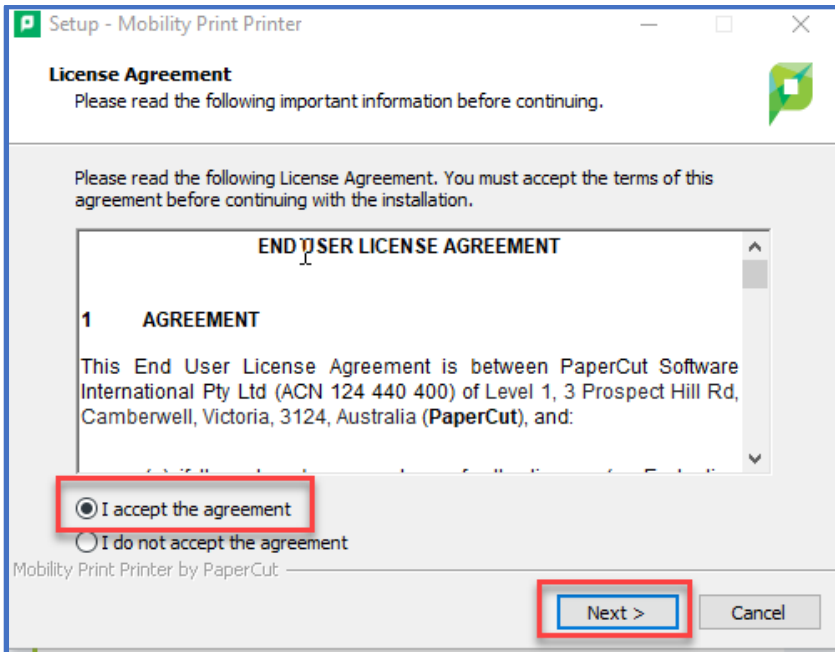


The Download will start and then start running the application. You may need to start the Install manually.

Select OK on the Papercut Select Setup Language

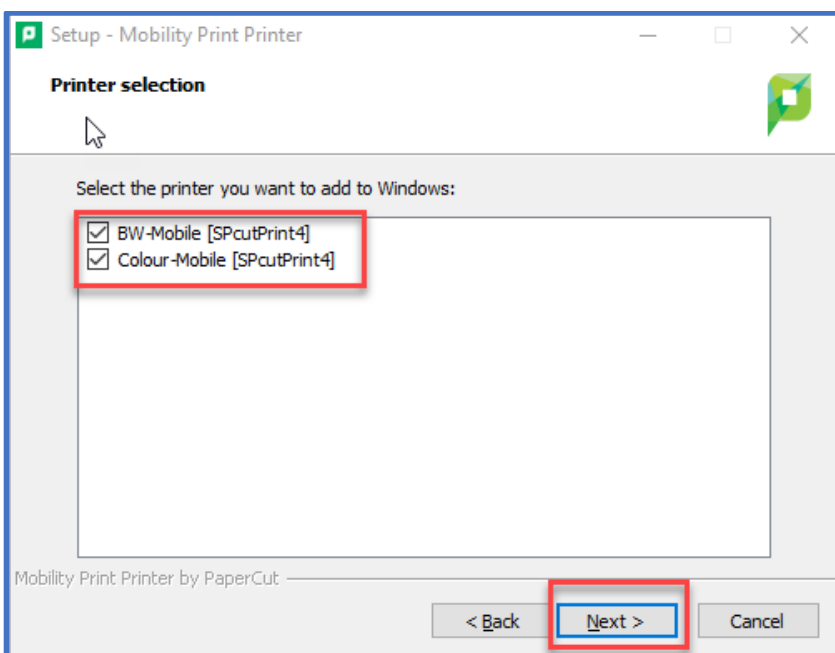


Accept the license agreement then select Next



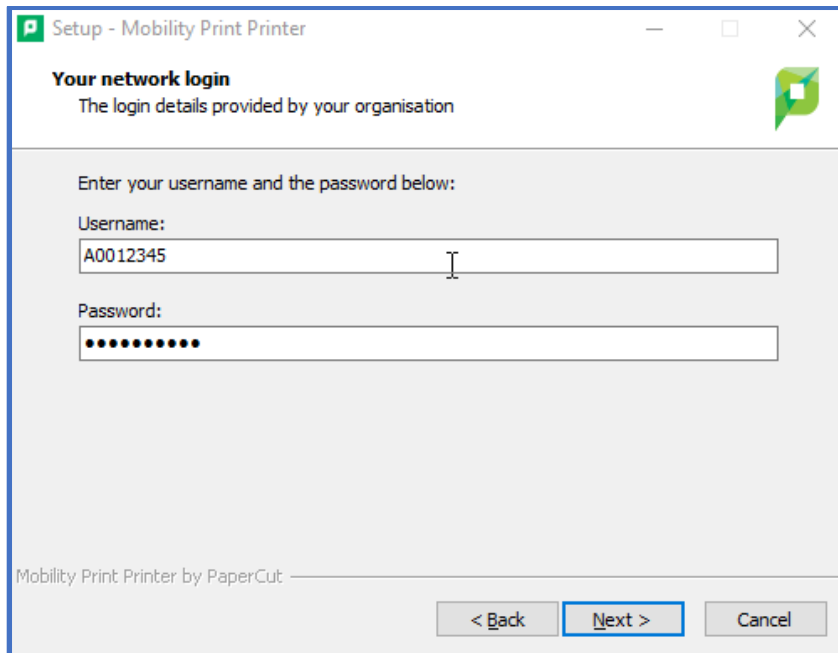
It will install Papercut Mobility and then return the list of available printers.

Select both BW-Mobile as well as Colour-Mobile and then Select Next.



Enter your Wits Staff or Student number and your current password.

Select Next and then Finish once the installation is complete.



Setup - Mobility Print Printer

Your network login
The login details provided by your organisation

Enter your username and the password below:

Username:
A0012345

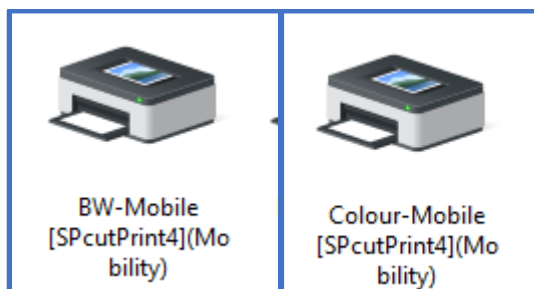
Password:
●●●●●●●●●●

Mobility Print Printer by PaperCut

< Back Next > Cancel

You can now Print as per normal from your application.

Select either the BW-Mobile [SPcutPrint4](Mobility) or Colour-Mobile [SPcutPrint4](Mobility) printer.



You can then release your printing at one of the Xerox Devices.